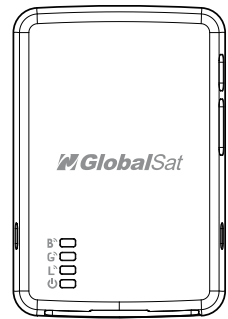
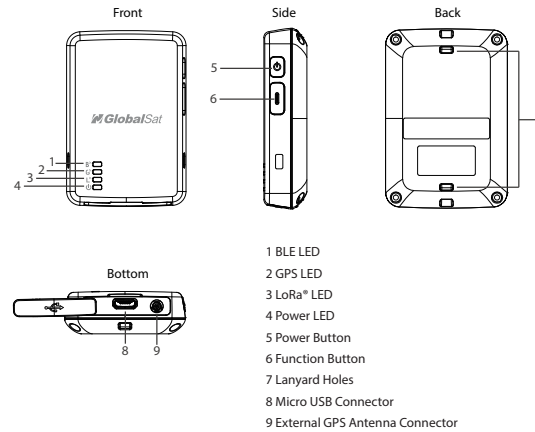


LT-501 Series User Manual



Version: 1.1



- 1 BLE LED
- 2 GPS LED
- 3 LoRa[®] LED
- 4 Power LED
- 5 Power Button
- 6 Function Button
- 7 Lanyard Holes
- 8 Micro USB Connector
- 9 External GPS Antenna Connector

Note:

1. Please use GPS active external antenna with MMCX connector for improving GPS receiving sensitivity.
2. LT-501R is another SKU with 19A battery to increase battery life a lot.

Power Status LED

LED	Green Constantly Lit	Green Blinking	Red Constantly Lit
State	LT-501 is fully charged	LT-501 is being charged	Battery power is low

Note:LT-501R uses one time battery and could not be charged, so that it only has battery low LED indication.

LoRa[®] LED

LED	Blinking Quickly
State	Data transmitting

BLE LED

LED	Blinking Quickly
State	Data transmitting

Note: For beacon transmitter type, LT-501 could receive iBeacon, Eddystone-UID and ALTBeacon.

GPS LED

LED	Blinking Quickly (Once per second)	Blinking Slowly (Once every 3 seconds)
State	LT-501 is searching for GPS fix	LT-501 receives GPS fix

Simplified DoC:

Hereby, GlobalSat WorldCom Corporation declares that the radio equipment type LT-501 is in compliance with Directive 2014/53/EU. The full text of the EU declaration of conformity if available at following internet address: <https://bit.ly/2Jt5ZbR>

LoRa [®] Frequency	EU 868 MHz (Model : LT-501E/ LT-501BE/ LT-501RE)
	US 915 MHz (Model : LT-501H/ LT-501BH/ LT-501RH)
	AS 923 MHz (Model : LT-501M/ LT-501MH/ LT-501RH)
RF Output Power	862-870 MHz (EU) @ 14dBm
	902-928 MHz (US) @ 20dBm
	920-928 MHz (ROA) @ 20dBm

Operating Temperature

With battery

State	Operating Temperature
Charge	0 ~ 45 °C
Operation	-20 ~ 60 °C
Storage	-20 ~ 80 °C

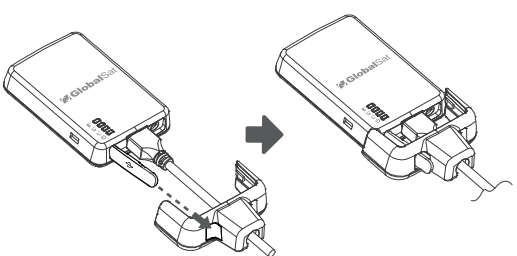
GlobalSat WorldCom Corporation
16F, No. 186, Jian 1st Rd, Zhonghe Dist.,
New Taipei City 23553, Taiwan
Tel: 886.2.8226.3799/ Fax: 886.2.8226.3899
lora@globalsat.com.tw
www.globalsat.com.tw

USGlobalSat Incorporated
14740 Yorba Court Chino, CA 91710
Tel: 888.323.8720 / Fax: 909.597.8532
sales@usglobalsat.com
www.usglobalsat.com

<http://www.globalsat.com.tw/s/2/product-c30692/loT-M2M.html>



1.3 Device charging



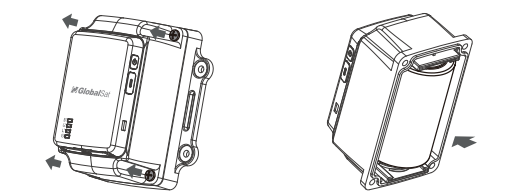
Using the device for the first time, rechargeable battery will require a complete 100% charge before LT-501 is operable. To maximize your device's battery life, proceed by performing the steps listed below.

1. Connect LT-501 to the AC power adapter via its cable.
2. Allow at least 2.5 hours of battery charging time.

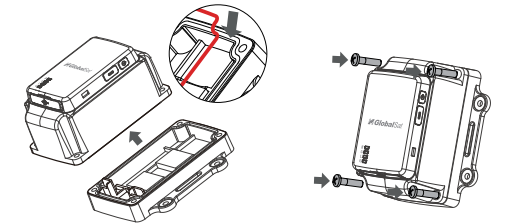
Note:
1. Refer to the illustration above to use the USB cable holder to make sure the micro USB cable and the LT-501 device are well connected.
2. The silicon cover for USB connector needs to be well sealed for IPX7 equivalence.
3. For LT-501R's battery is one time battery, it could not be charged.

Caution:
Risk of explosion if battery is replaced by an incorrect type.
Dispose of used batteries according to the instructions.

1.4 How to Replace 19A Battery



1. Unscrew the 4 screws on the four sides of LT-501R with a proper cross point screwdriver.
2. Remove the old battery. While pushing the new cell into the battery holder, just directly insert to end position.



3. Assembly LT-501R with the bottom cover properly. Waterproof rubber ring must not be deformed and be put in the groove of bottom cover.
4. Screw the 4 screws on the four sides of LT-501R.

Note:

1. For the best experience, we recommend using the brand Ultralife/EWT battery. The manufacture year should be within one year from the replace date.
2. When LT-501R is turned on, it would process battery activation for 15 seconds to several minutes according to the battery condition. All LEDs would be on during this process. After the battery activation is finished, not all LEDs would be on at the same time. The device would work normally according to its settings.
3. According to 19A battery's physical characteristics, the battery capacity shown in report will be floated in the range of 20% to 100%. This is because the battery capacity is calculated according to the voltage of the battery. This is not the matter of the quality of our product or the battery.
4. When you see battery low report, please replace with the new battery as soon as possible. GPS may not work properly and transmission power would become weak under battery low condition.

1.5 Accessories

